



96 x 96mm

### Features :

- ▶ Leakage current monitoring in 10 and 30 systems
- ▶ CBCT connection detection
- ▶ User selectable power ON delay, Trip time delay and Recovery time delay
- ▶ Adjustable switching hysteresis
- ▶ Test and reset function via front / remote
- ▶ Pre-alarm indication selectable
- ▶ Test & reset via front / remote

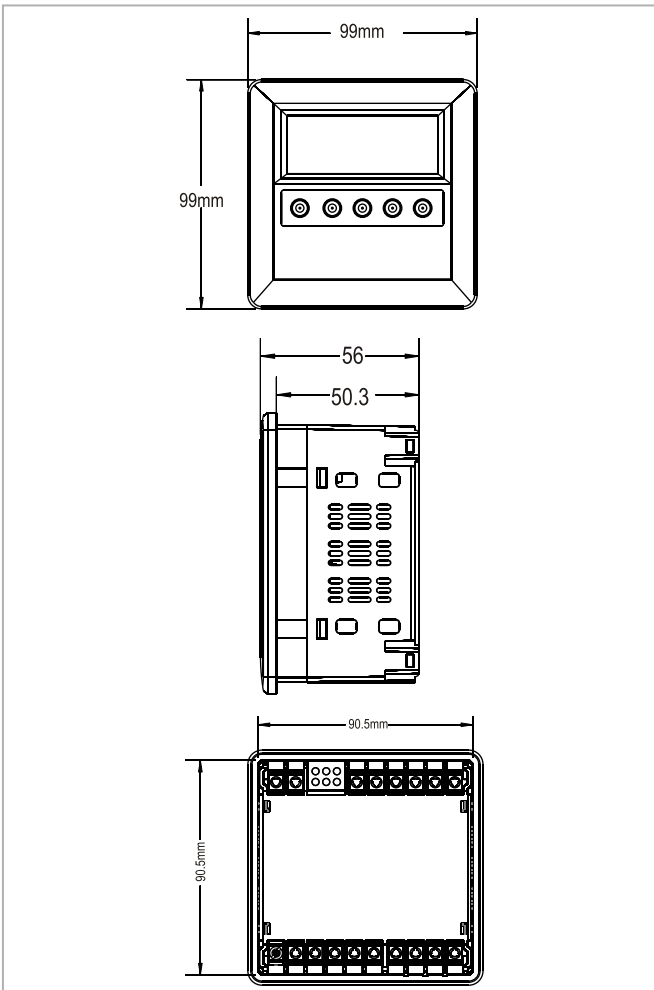
Certifications :

## Technical specifications

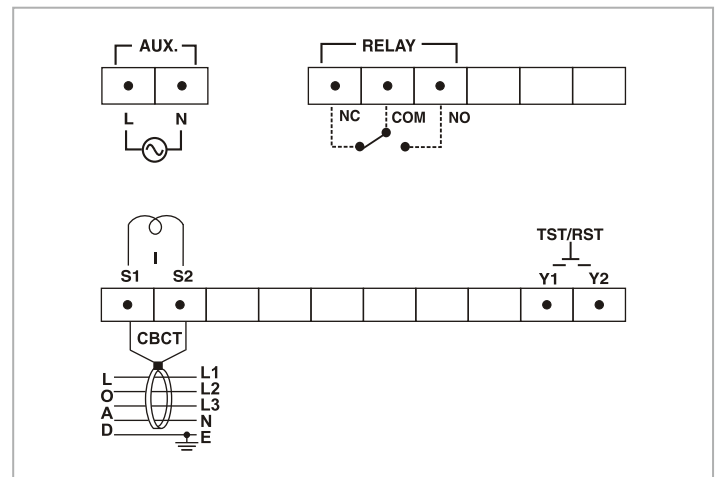
Display specifications		
Display	3 Digits 7 segment LED display	
No. of LED	2	
No. of keys	3	
LED Indication chart		
Conditions	'mA' LED	'R' LED
No fault	OFF*	OFF
Trip	OFF*	ON
CBCT Error	OFF*	ON
Pre-alarm	OFF*	Blinking
Input specifications		
Functions		
Measurements	Earth leakage current monitoring (via external CBCT)	
Time settings	Power ON delay, Trip time delay, Recovery time delay	
Latching	Selectable	
Reset	Auto / Manual (remote & front)	
Electrical connections	1Ø - 2 wire, 3Ø - 4 wire, 3Ø - 3 wire	
Trip settings		
Trip setting (earth fault)	30mA-30A	
Trip setting (earth fault)	15mA-33A	
Trip time settings		
Power on delay (fixed)	1-999sec	
Trip time delay (fixed)	0-999sec	
Recovery time delay	1-99min	
Response time	<30ms (If trip current = 5 x set value & Instantaneous trip is ON), <50ms (If trip current = 1 x set value)	
Hysteresis	5 to 40%	
Resolution		
Current	0.1mA, 1mA, 0.01A, 0.1A (depends on trip setting)	
Accuracy		
Current	±5% of setting	
Time	±5% of setting ±100ms	

Output specifications	
No. of relays	1
Type of output (relay)	1 C / O SPDT
Relay rating	NO / 5A @250V AC / 28V DC, NC / 3A @250V AC / 28V DC
Auxiliary supply specifications	
Supply voltage	90 - 270V AC/DC
Frequency	50 - 60Hz
Power consumption	4VA max
Environmental specifications	
Operating temperature	0 to 55 °C
Storage temperature	-20 to +70 °C
Humidity (non - condensing)	95% RH
Pollution degree	For PCB : 2, For product : 3
Degree of protection devices	IP20
Mechanical specifications	
Mounting	Panel mount
Size	96 x 96mm
Weight	250gms approx
Wire size (max)	0.5 NM

## Dimensions (all are in mm)



## Terminal connection



## Ordering information

Product code	Supply voltage	Certification
ELR-341-1	90-270V AC/DC	CE

## Accessories

Product code	Inner diameter	Turns ratio
CBCT-35-1	35mm	1000:1
CBCT-70-1	70mm	1000:1
CBCT-120-1	120mm	1000:1
CBCT-210-1	210mm	1000:1
CBCT-310-1	310mm	1000:1