

**selec****MA32-3**

Operating Instructions



96 x 96mm

**SPECIFICATIONS**

<b>Description</b>	: 3 Ø Digital Ammeter
<b>Display</b>	: 4 Digit 7 Segment LED Display
<b>Wiring Input</b>	: 3 Ø 4 W, 3 Ø 3 W, 1 Ø 2 W
<b>Rated Input Current</b>	: Nominal 5A AC (Min-50mA, Max-6.2A)
<b>Over Range Indication</b>	: "Or" for input > 6.2A
<b>CT Primary</b>	: 1-999.0kA
<b>CT Secondary</b>	: 1A or 5A
<b>Resolution</b>	: Auto resolution depend upon CT ratio
<b>Accuracy</b>	: ±0.5% of Full Scale
<b>Measuring Method</b>	: True RMS
<b>Display Update Time</b>	: 1 sec
<b>Power Consumption</b>	: Less than 5VA
<b>Supply Voltage</b>	: 40-300V AC/DC, 50/60Hz
<b>Weight</b>	: 165gms
<b>Mounting</b>	: Panel mounting

**Environmental Conditions :**

Operating Temperature	: -10°C to 55°C
Operating Storage	: -20°C to 75°C
Relative Humidity	: Upto 85% (Non-condensing)
Pollution Degree	: II

**ORDER CODE INFORMATION**

Product	Supply Range	Certification
MA32-3-G-40/300V-CE	40-300V AC/DC, 50/60Hz	✓
MA32-3-G-40/300V	40-300V AC/DC, 50/60Hz	....

**SAFETY PRECAUTIONS**

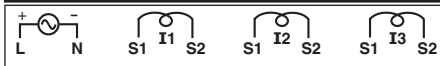
All safety related codifications, symbols and instructions that appear in this operating manual or on the equipment must be strictly followed to ensure the safety of the operating personnel as well as the instrument.

If the equipment is not used in a manner specified by the manufacturer it might impair the protection provided by the equipment.

- Do not use the equipment if there is any mechanical damage.
- Ensure that the equipment is supplied with correct voltage.

**⚠ CAUTION :**

1. Read complete instructions prior to installation and operation of the unit.
2. Risk of electric shock.
3. The equipment in its installed state must not come in close proximity to any heating sources, caustic vapors, oils, steam or other unwanted process by products.

**TERMINAL CONNECTIONS**

## AUTO MANUAL DESCRIPTION

Press **>** key for 3 sec. to switch in auto and manual mode.

## CONFIGURATION

- Use **>** + **▲** key to enter & exit from configuration menu for 3 sec.
- Use **▲** key to go to next parameter.
- Use **>** key to edit the parameter & press same key for 2 sec. to save parameter.
- Use **▲** key to increment parameter value.
- To set the value of CT primary in kA, first edit the value and then press **▲** key for 3 sec., Display will shift to kA with resolution 000.0kA & this process is same, to set the value of CT primary in A.

Config. page.	Function	Range or Selection	Factory Setting
1	Network Selection	3Ø4W, 3Ø3W, 1Ø2W-R, 1Ø2W-Y, 1Ø2W-B	3P4W
2	CT Primary	1-999.0kA	5
3	CT Secondary	1 or 5	5

## ONLINE PAGE DESCRIPTION

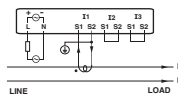
Press Key ( <b>&gt;</b> )	KEY PRESS	DESCRIPTION
	—	Displays 1 <sup>st</sup> Phase Current
	1 <sup>st</sup> time	Displays 2 <sup>nd</sup> Phase Current
	2 <sup>nd</sup> time	Displays 3 <sup>rd</sup> Phase Current
	3 <sup>rd</sup> time	Displays average current of three phase.

## SERIAL NUMBER DESCRIPTION

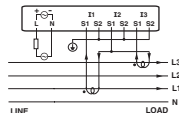
Press **▲** key for 10 sec. to display 8 digit serial number for 3 sec. in two windows.

## WIRING DIAGRAM

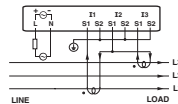
1Ø-2W, 1 CT



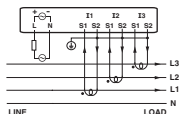
3Ø-4W, 2 CT



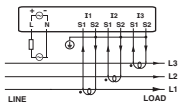
3Ø-3W, 2 CT



3Ø-4W, 3 CT



3Ø-3W, 3 CT



(Specifications are subject to change, since development is a continuous process.)

## Selec Controls Pvt. Ltd.

### Factory Address :

EL-27/1, Electronic Zone, TTC Industrial Area, MIDC, Mahape, Navi Mumbai - 400 710, India.

Website : [www.selec.com](http://www.selec.com)

### For Sales & Support,

Tel. No. : +91-22-41418468 / 452

Mob. No. : +91-9136977315, Email : [sales@selec.com](mailto:sales@selec.com)

### For Service,

Tel.No. : +91-7498077172/ +91-7400069545

Email : [service@selec.com](mailto:service@selec.com)