



## Features:

- ▶ 3Ø-3 wire input
- ▶ Multiple LEDs for fault indication
- ▶ Time delay for tripping
- ▶ User selectable:
  - Phase asymmetry 40V / 65V
  - Single phase preventor / Phase sequence relay
  - Voltage Protection - ON / OFF

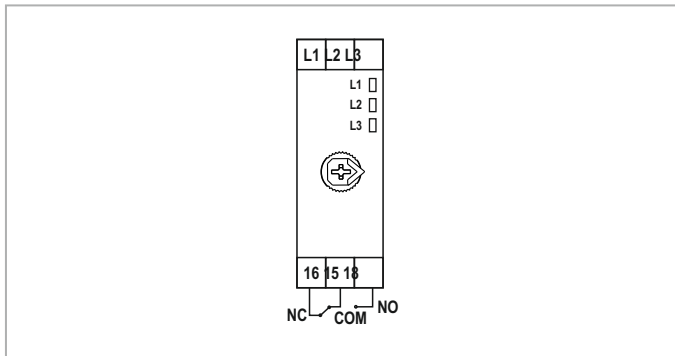
Certifications :

## Technical specifications

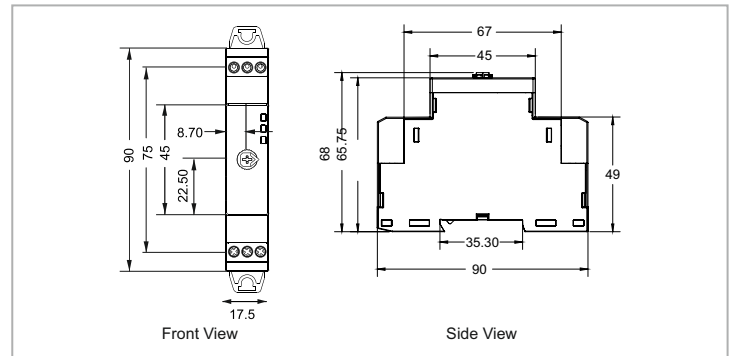
Display specifications			
Type	Analog		
No. of LED	3		
No of knob	1		
LED Indication chart			
Condition	<b>LED 1</b>	<b>LED 2</b>	<b>LED 3</b>
Power ON delay	ON	ON	ON
Healthy	OFF	OFF	OFF
Below operating range	OFF	ON	ON
R phase loss	OFF	ON	ON
Y phase loss	ON	OFF	ON
B phase loss	ON	ON	OFF
Phase sequence	Blink every 1 sec	Blink every 1 sec	Blink every 1sec
R phase asymmetry	Blink every 1 sec	ON	ON
Y phase asymmetry	ON	Blink every 1 sec	ON
B phase asymmetry	ON	ON	Blink every 1 sec
Input specifications			
Operating voltage range	154-520V AC		
Nominal voltage	415V AC		
VA rating	<20VA		
Frequency	50/60 Hz		
Voltage accuracy	±1% of full range		
Time accuracy	±5% of set value		
Pot setting	0-10 sec (for phase asymmetry, over-voltage and under-voltage)		
Dip switch setting			
Parameter	<b>LED 1</b>	<b>LED 2</b>	
SW1	Phase asymmetry 65V	Phase asymmetry 40V	
SW2	SPP	PSR	
SW3	Under voltage, Over voltage = ON	Under voltage, Over voltage = OFF	
Trip time setting			
Power ON delay	<400msec		
Trip time delay	<250msec		
Response time	<250msec		
Recovery time	<250msec		

Functional specifications	
Network selection	Default: 3P3W
Under voltage	Default: OFF, Value: 310V
Over voltage	Default: OFF, Value: 500V
Phase asymmetry	Default: ON
Phase failure	Default: ON
Phase sequence	Default: ON
Output specifications	
Total number of relays	1
Type of relay	1 SPDT relay (1 C/O)
Relay contact rating	NO: 5A @250V AC/30V DC (resistive) NC: 5A @250V AC/30V DC (resistive)
Electrical endurance	Z type: 5x10 <sup>4</sup>
Mechanical endurance	10 <sup>7</sup> (10000000)
Environmental specifications	
Operating temperature	0 °C to 50 °C
Storage temperature	-20 °C to 70 °C
Relative humidity (non-condensing)	Up to 95% RH
Degree of protection	IP20 for terminals, IP50 for enclosure
Degree of pollution for product	III
For PCB	II
Mechanical specifications	
Mounting	DIN rail, Wall mount
Weight	70 gms
Screw tightening torque	0.5NM

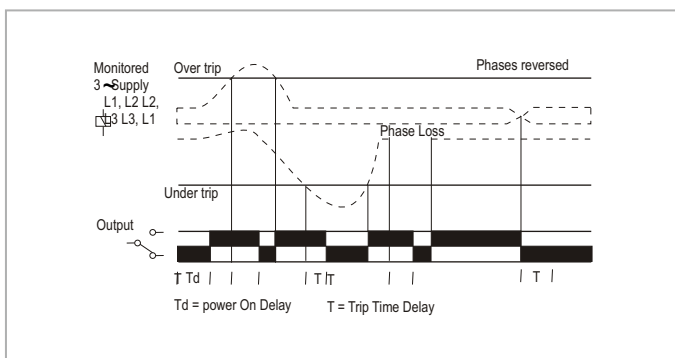
## Terminal connections



## Dimensions (all are in mm)



## Timing diagram



## Ordering information

Product code	Supply voltage	Certification
640PSR-V-CE	154 to 520V AC	CE