



Features :

- ▶ Earth fault monitoring in 1Ø and 3Ø systems
- ▶ True RMS Measurement (AC)
- ▶ Power ON delay, Trip time delay & Recovery time delay
- ▶ Adjustable switching hysteresis
- ▶ Two alarm relays with NC or NO operation selectable
- ▶ Test and reset function via front / remote
- ▶ LCD with backlight
- ▶ DIN Rail mount

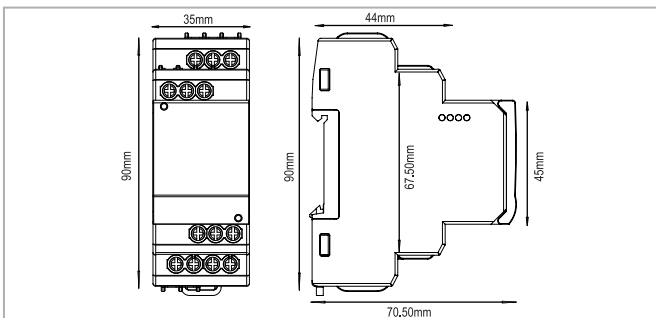
Certifications : 

Technical specifications

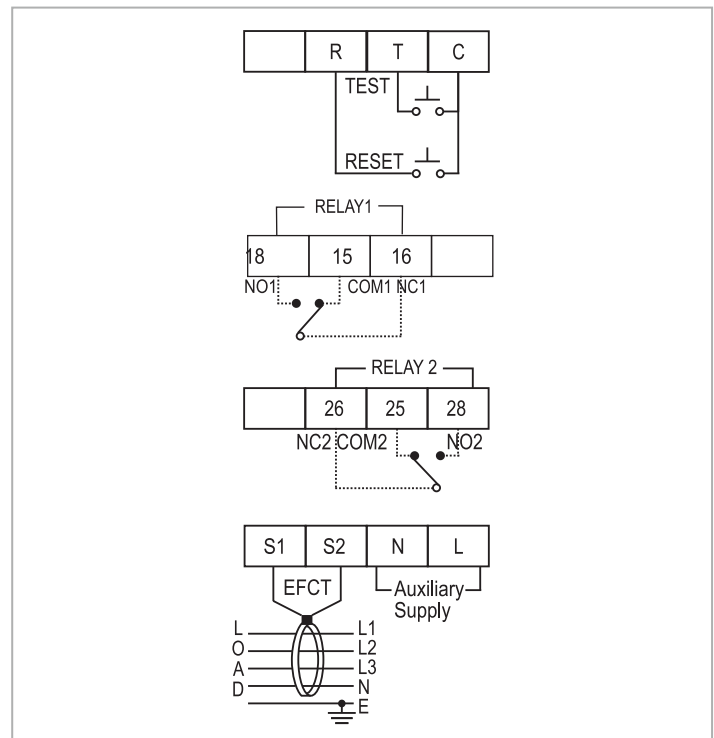
Display specifications		
Type	Digital	
Display	Liquid crystal display with backlight	
No. of LED	2	
No. of push button	2	
LED Indication chart		
Conditions	'R1' LED	'R2' LED
Nominal condition	OFF	OFF
Fault conditon	ON	ON
Phase reverse	OFF	ON
Phase asymmetry	ON	ON
Phase failure	Blinking	Blinking
Under current		
Input specifications		
Functions		
Measurements	Earth fault monitoring	
Time settings	Power ON delay, Trip time delay, Recovery time delay, Response time	
Alarm indications	Trip	
Latching	Selectable	
Reset	Auto / Manual (Remote & front)	
Electrical connections	1Ø - 2 wire, 3Ø - 3 wire, 3Ø - 4 wire	
Frame rating (CT Primary)	160A, 250A, 630A	
M.C.C.B Rating	Depends on frame rating	
Trip setting (Earth fault)	10% to 80% of Selected MCCB frame rating	
Trip time settings		
Power on delay (Fixed)	0.5 - 99.9 sec	
Trip time delay (Fixed)	0 - 99.9sec	
Recovery time delay	0 - 99.9sec (In auto reset mode)	
Respon time	< 100ms	
Hysteresis	1 to 10% of Fault current setting	
Resolution		
Current	0.1A (When fault current is less than or equal to 99.9A) 1A (When fault current is greater than 100A)	

Accuracy	
Current	±5% of Setting ±2 digits
Time	±5% of Setting ±100ms
Output Specifications	
No. of relays	2
Type of output (Relay 1)	1 C/O SPDT
Type of output (Relay 2)	1 C/O SPDT
Relay rating	NO / 5A@250V AC, NC / 3A@250V AC
Auxiliary supply specifications	
Supply voltage (Factory set)	85 to 270V AC / DC
Frequency	50 / 60Hz
Environmental specifications	
Operating temperature	0 to 55°C
Storage temperature	-20 to +70°C
Humidity (Non - condensing)	Up to 95% RH
Pollution degree	2
Degree of protection devices	IP20
Mechanical specifications	
Mounting	DIN Rail
Weight	150gms
Screw tightening torque	0.5 NM
Wire size (Max)	4sq.mm

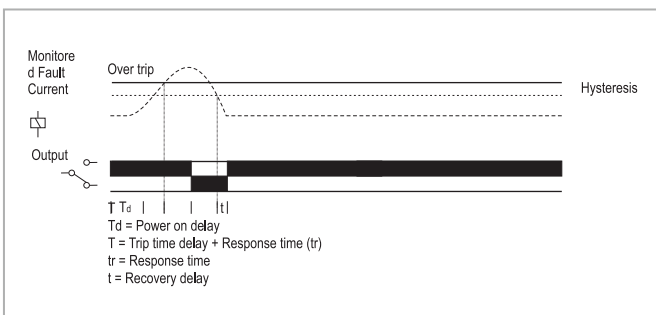
Dimensions (All are in mm)



Terminal Connection



Timing Diagram



Compliance

Applicable EMI / EMC Standards		
Product Standard : IEC 60947-2		
Category	Reference Standards	Testing level
Electrostatic discharge	IEC 61000-4-2	Level-3
Electrical fast transient / Brust	IEC 61000-4-4	Level-3
Electromagnetic field	IEC 61000-4-3	Level-3
Surge	IEC 61000-4-5	Level-3
Conducted RF	IEC 61000-4-6	Level-2
Rated power frequency	IEC 61000-4-8	Level-4
Voltage dip / Short interruptions	IEC 61000-4-11	Level-3
Conducted emissions	CISPR-11	Class-B
Radiated emission	CISPR-11	Class-A
Emission & Immunity	IEC 61326-1	
Safety	IEC 61010-1	

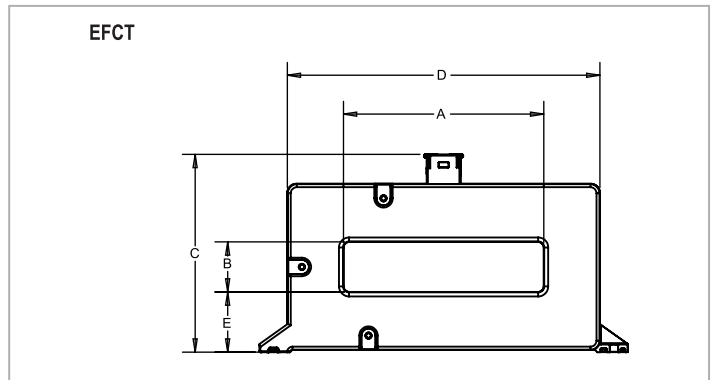
Ordering Information

Product Code	Dimension in mm	Current Transformer Ratio
EFCT 100/25 160/1A VAL CL1	100 x 25	160/1A
EFCT 140/35 160/1A VAL CL1	140 x 35	160/1A
EFCT 140/35 250/1A VAL CL1	140 x 35	250/1A
EFCT 180/35 250/1A VAL CL1	180 x 35	250/1A
EFCT 180/35 630/1A VAL CL1	180 x 35	630/1A
EFCT 220/50 630/1A VAL CL1	220 x 50	630/1A

Ordering information

Product code	Supply voltage	Certification
900EFR-BL-U-CE	85 to 270V AC / DC	CE

ACCESSORIES



EFCT TYPE	Dimensions (mm)				
	A	B	C	D	E
EFCT 100X25	100	25	100	156	30
EFCT 140X35	140	35	114	201	32
EFCT 180X35	180	35	109	236	30
EFCT 220X50	220	50	128	276	32